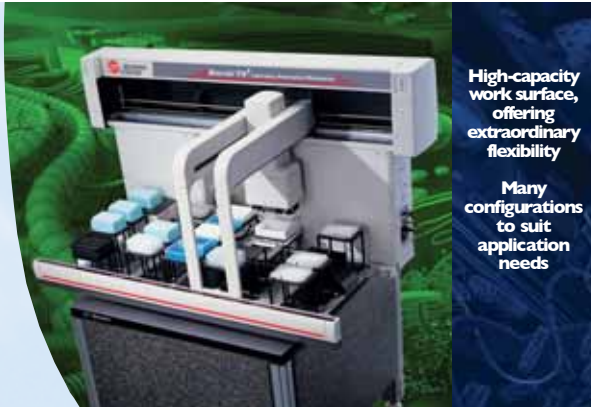




*Flexible solutions for confidence in results.*

**BIOMEK® FX<sup>P</sup>**  
LABORATORY AUTOMATION WORKSTATION





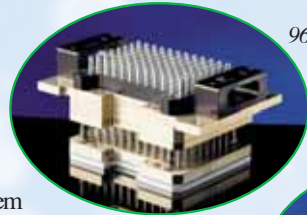
**High-capacity work surface, offering extraordinary flexibility**

**Many configurations to suit application needs**

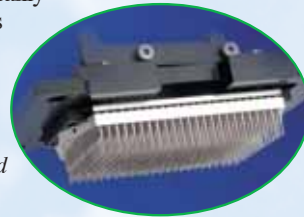
## Biomek<sup>®</sup> FX<sup>P</sup> workstation

The Biomek FX<sup>P</sup> is the latest entry in the Biomek line. With an up-to-date hardware design for greater positional accuracy and increased robustness, it can meet the needs of just about any application. It can be configured with either one or two pipetting pods. With its large deck capacity, the Biomek FX<sup>P</sup> sets the standard for flexible laboratory solutions to meet your changing needs. It puts every aspect of liquid handling – including pipetting, dilution, dispensing and integration – into a single, automated system that is as powerful and flexible as it is efficient and economical. Combined with the proven Biomek Software and our ongoing applications development, Biomek FX<sup>P</sup> is bringing new possibilities to life.

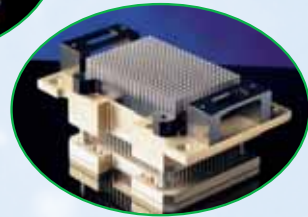
The Biomek FX<sup>P</sup> continuum starts with a single-pod system. Equip the high-capacity deck with Automated Labware Positioners (ALPs) suited to your application to create a dedicated workhorse system. Choose a 96- or 384-multichannel pipetting head, or opt for a pin-tool system for high-density replication tasks. The multichannel pod heads are easily swapped out for maximum flexibility and system reconfiguration as your needs change. A Span-8 configuration featuring independent well access also is available for tube-based operations and where flexible access to wells in a plate is needed.



96-well head



Pin-tool head



384-well head



With the Biomek FX<sup>P</sup>, the Biomek is just the beginning. Its open architecture allows for integrations of readers, plate washers, labware storage devices and robotic transport systems. The gripper built into the multichannel pod provides fast and reliable labware movement around the deck, as well as the capability to de-lid and re-lid plates, create vacuum manifold assemblies and access integrated devices.

## The right features – right where you need them

Knowing that the ability to adapt to changing situations is critical for today's labs, our systems are designed with the flexibility to accommodate whatever your needs may be. Build your Biomek system to handle today's requirements, make modifications as necessary, add accessories whenever and wherever extra capability is important, and use our wide variety of modules to manage tomorrow's needs with specifically targeted solutions.

**Interchangeable pipetting heads with Biomek NX<sup>P</sup>**

**Multiple syringe and probe options**







### *Two heads are better than one*

A dual-pod system is the smart choice for busy labs. Choose a hybrid system (multichannel pod and Span-8) for maximum process flexibility. Perform hit-picking operations quickly. Replicate plates with a 96- or 384-well head, then add reagents unique to each well with the Span-8 pod, using tubes, plates or reservoirs as sources. With new support for clot detection and septum piercing, the FX<sup>®</sup> Span-8 pod gives you confidence that your samples will be dispensed consistently and reliably to their proper locations.



### *Efficient plate replication*

A dual-multichannel pod instrument makes plate replication tasks fast and efficient. A system with both 96 and 384 heads can rapidly condense and replicate 96-well library plates into 384-well dilution plates. Or, use the HDR Tool (pin-tool head) on one pod, and a pipetting head on the other. A dual-multichannel system also is an excellent choice for filtration applications.

### *Scale up to a Biomek Assay Workstation*

The Biomek FX<sup>®</sup> can serve as the central component in an assay workstation – a complete assay automation system including labware storage, incubation, plate washing, plate reading and other components. Powered by SAMI<sup>®</sup> Workstation EX software, the Biomek Assay Workstation is the system of choice for ELISAs, cell-based assays or any other process containing time-critical incubations. Assay Workstations are tightly integrated to maximize capacity and throughput in a small footprint.



### *Use intelligent software*

Simplify your assay development with SAMI Workstation EX, a powerful scheduling environment with an intuitive user interface.





Confirmatory barcode reads

No deck space needed for barcode reader

Error handling gives users recovery options

### *Built-in barcode reader delivers on-the-fly plate tracking*

With the ability to scan plates being held by the gripper, sample integrity is ensured. Sample IDs can be imported based on the plate barcode and tracked throughout the run. If barcode inconsistencies are detected, Biomek® Software allows a wide range of user-controlled corrective actions, logging and error handling instructions.

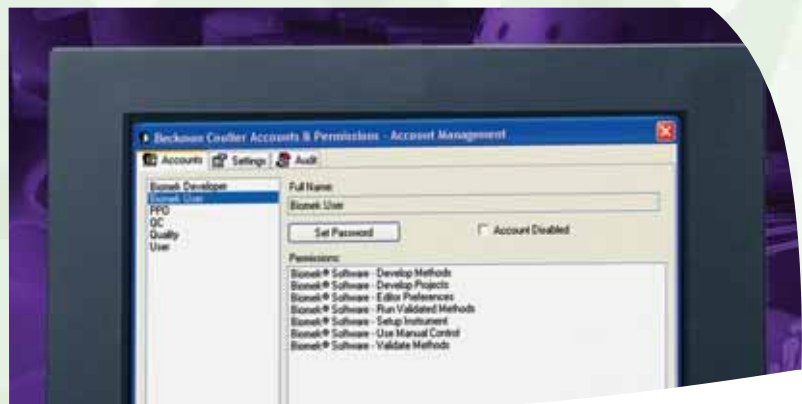


### *Software for your needs*

First-time user of automated liquid handling technology? Experienced specialist? Either way, you'll find that Biomek Software is packed with easy-to-use features to meet any need. And with a single, consolidated user interface driving all Biomek liquid handlers, it is simple to move between platforms. Since many functions are combined into a single step, setup is fast and effortless. And specialized algorithms speed programming even more by suggesting the best settings for the job at hand. All of which lets any user make the most of everything that Biomek FX® has to offer.

### *21 CFR Part 11 compliance*

To help achieve regulatory compliance with 21CFR Part 11 - and perform validation assays in a regulated environment - Biomek Software delivers the ability to set different user accounts and permissions, track revision control and enable electronic signatures. It also requires users to register any change to methods and stores all versions.







## Screening Solutions

The Biomek<sup>®</sup> FX<sup>®</sup> is the right instrument for screening – both primary and secondary – as well as all your replication and reformatting tasks in between. Choose a preconfigured Biomek FX<sup>®</sup> solution with validated or verified methods, or outfit a system tailored exactly for your unique needs. With an array of Beckman Coulter peripherals and ALPs from which to choose, plus a library of third-party integrations available, the Biomek FX<sup>®</sup> will deliver solid performance in your assay.



## Validated Solutions for ADMETox

The ADMETox Workstation provides the automation for high-throughput ADMETox screening assays for qualifying leads and profiling potential drug candidates. The workstation supports *in vitro* assays to measure absorption, metabolism and toxicology. The supported absorption assays include pION's PAMPA and  $\mu$ SOL technologies and cell-based assays using Caco-2 cells. The supported metabolism assays include Cytochrome P450 inhibition studies and microsomal stability assays. Toxicology assays include Promega's cell proliferation assay, CellTiter<sup>®</sup>; cytotoxicity measurements, CytoTox-ONE<sup>®</sup>; and apoptosis assays, Caspase-Glo<sup>®</sup>.

The ADMETox Workstation comes with an analysis package that enables the user to speed the decision-making process for further drug development.

## Detection assays

Cytokines have been shown to regulate immunologic responses and cell-to-cell communication, as well as dose responses to infectious agents. Their presence at elevated levels can indicate disease progress. Combined with our Biomek FX<sup>®</sup> workstation, the Immunotech Cytokine kits deliver fast and efficient methods to measure the different types of Cytokines present in a cell, while adding to the proteomics and cellular analysis solutions available from Beckman Coulter.

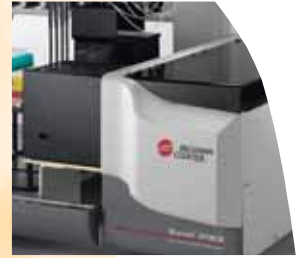
## The right applications – the right way

The demands of the life science world are changing daily. So at Beckman Coulter, we're continuously delivering new ways to accelerate your valuable research. Our dedicated applications group, for instance, is focused exclusively on creating automated solutions for a variety of commercially available kits. eLabNotebook gives you quick access to a wide variety of in-house and customer-developed applications. And our renowned Biomek Software makes it easy to develop methods to meet your individual needs. Put it all together with our robust new Biomek FX<sup>®</sup> Laboratory Automation Workstation and it is easy to see we are giving you the tools to do your best science, your way.

Use Span-8 device to add reagents individually, precisely when needed

Optional integrated storage devices accommodate long incubation times



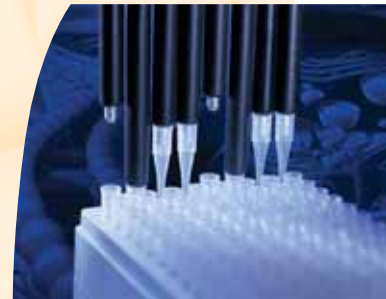


## *Sample preparation*

The need for increased throughput for molecular techniques – particularly DNA/RNA purification methods – has led to a number of purification protocols on automated platforms. These automated methods, however, must generate high-quality results in order to be used by downstream applications such as sequencing, PCR\* and transfection. The Biomek® FX<sup>P</sup> provides a complete portfolio of nucleic acid sample preparation solutions for DNA and RNA with the magnetic bead-based Agencourt® SPRI® technology.

## *Automated PCR and sequencing reaction setup*

Biomek FX<sup>P</sup>'s reliable, repeatable pipetting, tube-to-plate capability and efficient automation combine to provide the ideal automation solution for this routine process, while fitting seamlessly into any lab's workflow. And its low-volume capability helps miniaturize reaction setups and save on costly reagents.



**PCR & sequencing applications**

**Submicroliter transfers**

**Reaction setup in less than 30 minutes**

## *PCR and sequencing reaction cleanup*

Reaction cleanup is a simple process, to remove unwanted nucleotides and primers before running samples on a DNA analyzer, such as the CEQ™ Series from Beckman Coulter or other sequencing platforms from Applied Biosciences or GE Healthcare. To accommodate a wide variety of cleanup protocols, the Biomek FX<sup>P</sup> has been optimized for automation of paramagnetic technology. Configure a Biomek FX<sup>P</sup> with the Agencourt CleanSEQ® Dye Terminator Removal kit to process up to 17 plates per hour for your high-throughput sequencing needs.



**Magnetic bead technology**

**Validated methods for SPRI protocols**

**Up to 17 plates per hour**